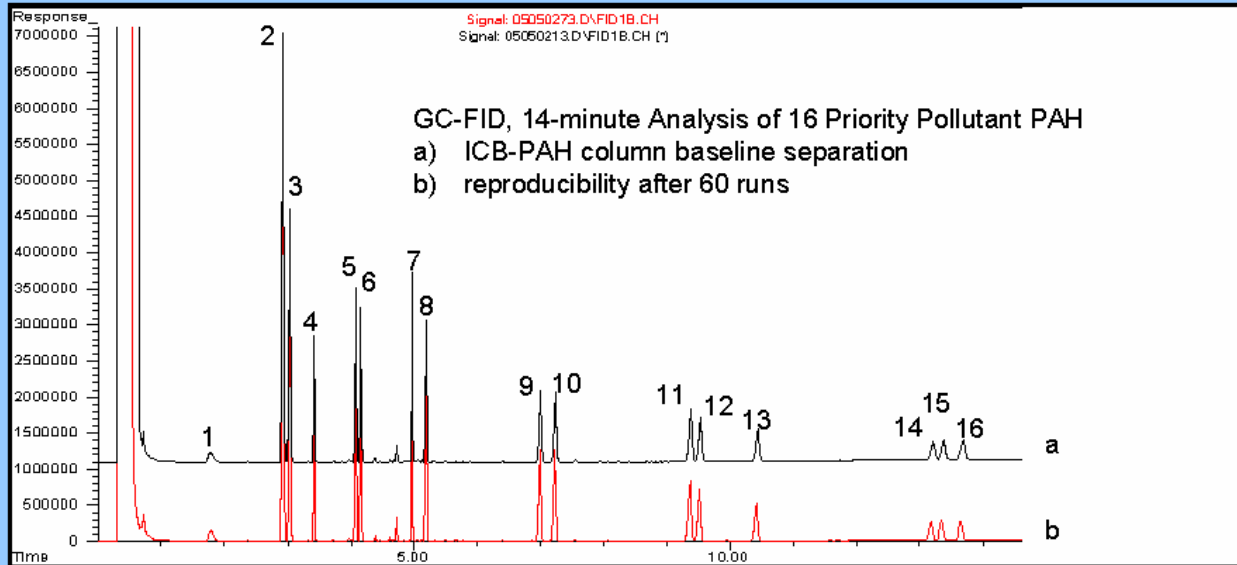


## Reproducible Analysis of PAH

Reproducible baseline separation of USEPA Method 610 PAH on ICB-PAH column



**Figure 1:** Separation of USEPA Method 610 PAH on ICB-PAH Column.

Upper chromatogram, 1<sup>st</sup> run; Lower chromatogram, 60<sup>th</sup> run.

**Column:** ICB-PAH, 12 m x 0.25 mm x 0.15  $\mu$ m film thickness.

**Chromatographic Conditions:** Temperature program:

120<sup>o</sup>C for 1 min., to 220<sup>o</sup>C @ 40<sup>o</sup>C/min, to 270<sup>o</sup>C @ 5<sup>o</sup>C/min, 5 min at 270<sup>o</sup>C.

**Peaks:** 1. Naphthalene; 2. Acenaphthylene; 3. Acenaphthene; 4. Fluorene; 5. Phenanthrene;

6. Anthracene; 7. Fluoranthene; 8. Pyrene; 9. Benz[a]anthracene; 10. Chrysene;

11. Benzo[b]fluoranthene; 12. Benzo[k]fluoranthene; 13. Benzo(a)pyrene; 14. Indeno[1,2,3-cd]pyrene;

15. Dibenzo[a,h]anthracene; 16. Benzo[ghi]perylene.