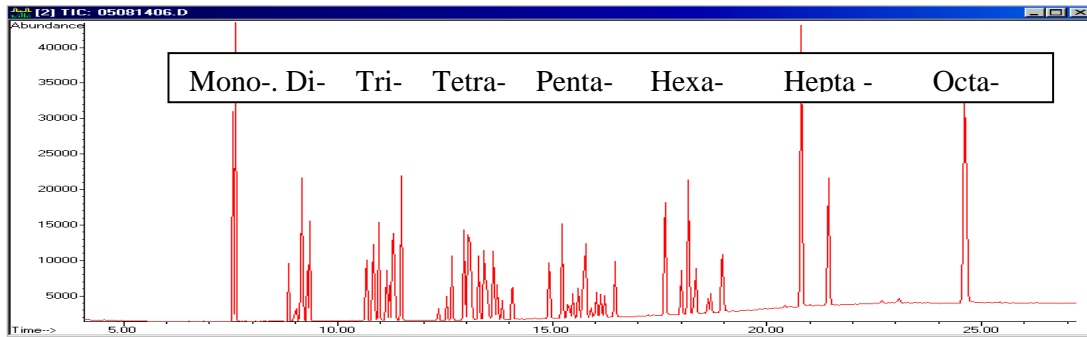


PCDD/PCDF REFERENCE MIXTURES

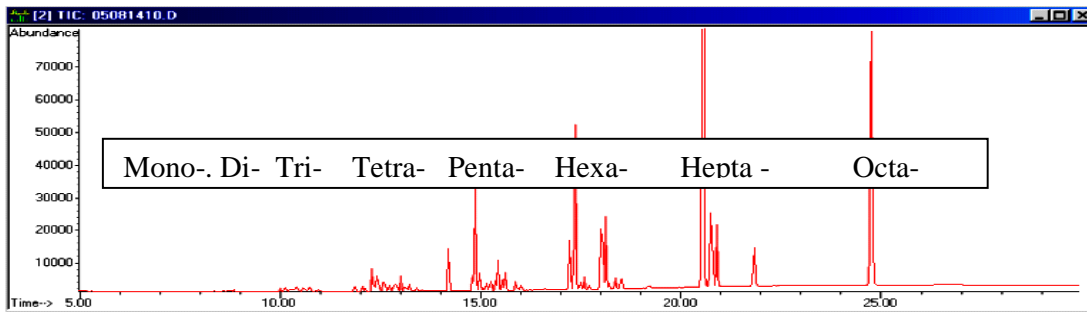
Column: ICB-5, 60m x 0.25 mm x 0.25 mm film, PN: 2060-25025.
Oven: 120 °C (1) to 220 °C @ 30 °C/min to 300 °C @ 5 °C /min (10 min)
Injector: Split 2:1, Temp: 250 °C.
Carrier gas: Helium, average velocity: 39 cms/sec.
Detector: MSD

GC-MS/EI-SIM monitoring of Mono- to Octa- CDD/F ions

Reference Mixture: N-PCDD (P/N: ES-102)



Reference Mixture: N-PCDF (P/N: ES-300-5)



Reference Mixture: N-PCDD/F (P/N: ES-400)

