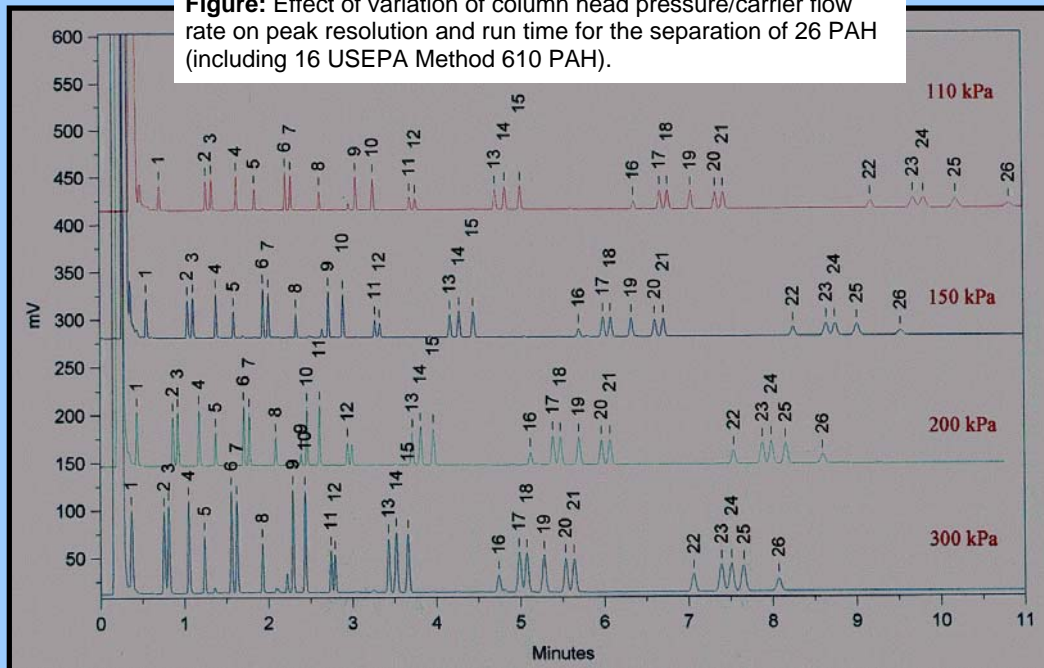


Fast Analysis of PAH (FID)

Figure: Effect of variation of column head pressure/carrier flow rate on peak resolution and run time for the separation of 26 PAH (including 16 USEPA Method 610 PAH).



Column: ICB-PAH, 12 m x 0.25 mm x 0.15 μm film thickness.

Chromatographic Conditions: Temperature program:

80°C for 1 min., to 250°C @ 40°C/min, to 285°C @ 7°C/min, 5 min at 285°C.

Peaks: 1. Naphthalene; 2. Acenaphthylene; 3. Acenaphthene; 4. Fluorene; 5. 9,10-Dihydroanthracene; 6.

Phenanthrene; 7. Anthracene; 8. 1,2,6,7-Tetrahydropyrene; 9. Fluoranthene; 10. Pyrene;

11. Benzo[a]fluorene; 12. Benzo[e]fluorene; 13. Triphenylene; 14. Benz[a]anthracene; 15. Chrysene;

16. Naphthacene; 17. Benzo[b]fluoranthene; 18. Benzo[k]fluoranthene; 19. Benzo(e)pyrene; 20. Perylene;

21. Benzo[a]pyrene; 22. Dibenz[a,c]anthracene; 23. Indeno[1,2,3-cd]pyrene; 24. Dibenzo[a,h]anthracene; 25.

Benzo[ghi]perylene; 26. Picene.