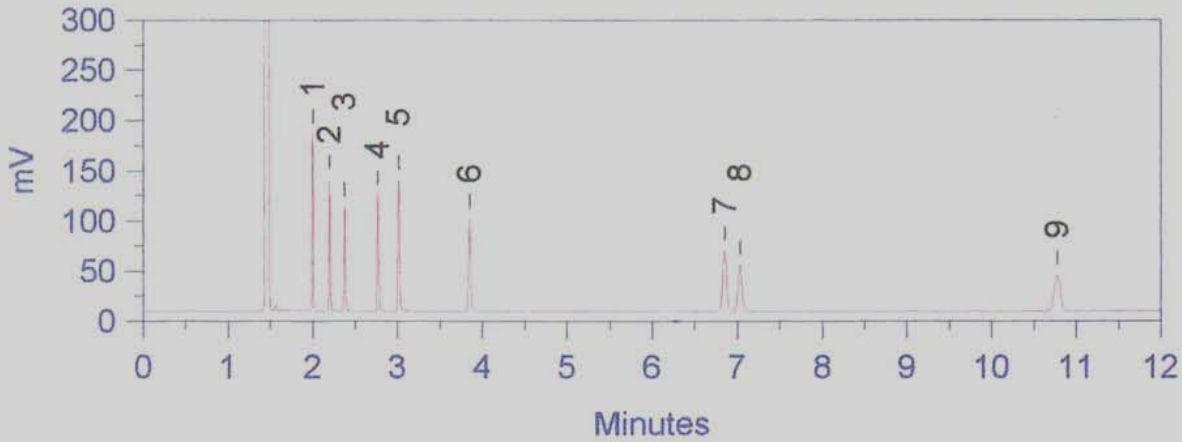


# Applications of ICB-1 column

## Column Performance Test Mix

Column: ICB-1, 30m x 0.32mm x 0.25µm film  
P/ N 1030- 32025  
Injector: Split, 225°C, 1:60  
Detector: FID, 320°C  
Carrier: Hydrogen, 50kPa column head pressure  
Temp: 125°C, isothermal

1. n-Decane
2. 1-Octanol
3. 2,6-Dimethylphenol
4. 2,6-Dimethylaniline
5. Naphthalene
6. 1-Decanol
7. n-Tetradecane
8. Methyl Undecanoate
9. n-Pentadecane



## Primary Alcohols

Column: ICB-1, 30m x 0.32mm x 0.25µm film  
P/ N 1030- 32025  
Injector: Split, 225°C, 1:10  
Detector: FID, 320°C  
Carrier: Helium, 75kPa column head pressure  
Temp: 90°C for 2 min. to 300°C  
at 10°C per min.  
Bleed: <8pA @ 320°C

1. 1- Butanol
2. 1- Pentanol
3. 1- Hexanol
4. 1- Heptanol
5. 1- Octanol
6. 1- Nonanol
7. 1- Decanol
8. 1- Undecanol
9. 1- Dodecanol
10. 1- Tetradecanol
11. 1- Hexadecanol
12. 1- Octadecanol
13. 1- Eicosanol
14. 1- Docosanol

