

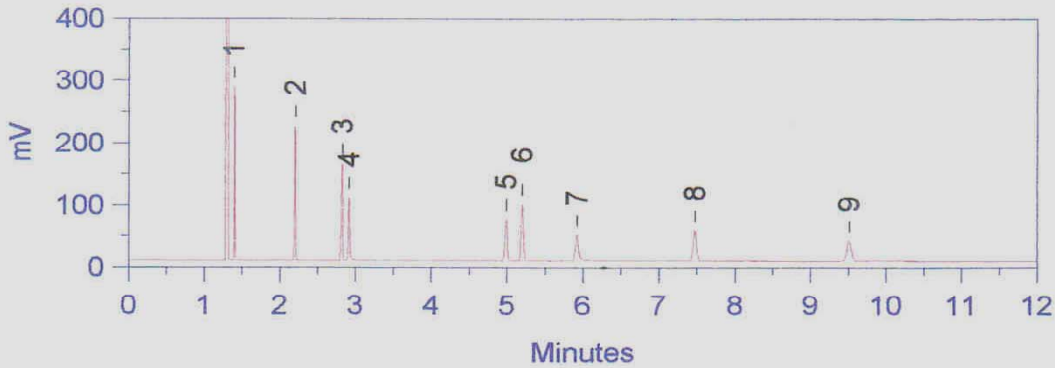
Application of Polar column

JK - WAX COLUMN APPLICATION

Column Performance Test Mix

Column: JK - WAX, 30m x 0.25mm x 0.12µm film
P/ N 5030- 25012
Injector: Split, 225°C, 1:60
Detector: FID, 280°C
Carrier: Hydrogen, 90kPa Column head pressure
Temp: 120°C, isothermal

1. n-Decane
2. n-Tetradecane
3. n-Pentadecane
4. 1-Octanol
5. Methyl Undecanoate
6. Naphthalene
7. 1-Decanol
8. 2,6-Dimethylaniline
9. 2,6-Dimethylphenol



Fatty Acid Methyl Esters (FAMES)

Column: JK - WAX, 30m x 0.25mm x 0.12µm film
P/ N 5030- 25012
Injector: Split, 225°C, 1:10
Detector: FID, 280°C
Carrier: Helium, 120kPa column head pressure
Temp: 50°C for 1 min. to 250°C
at 10°C per min.

1. Methyl Hexanoate
2. Methyl Heptanoate
3. Methyl Octanoate
4. Methyl Nonanoate
5. Methyl Decanoate
6. Methyl Undecanoate
7. Methyl-10-Undecanoate
8. Methyl Dodecanoate
9. Methyl Tetradecanoate
10. Methyl Hexadecanoate
11. Methyl Oleate
12. Methyl Linoleate
13. Methyl Octadecanoate
14. Methyl Eicosanoate
15. Methyl Docosanoate

